

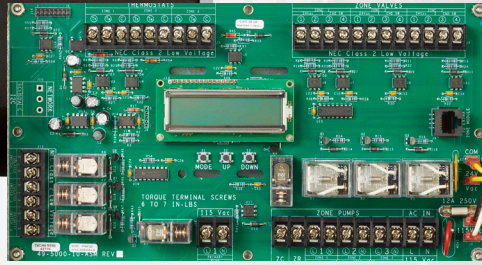


Switching Relays & Accessories

Easy, Economical Zoning with Circulators



UZ3/4/6
Universal Control*



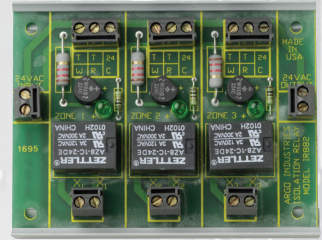
EZ1/3
Universal Control Expansion Module*



AR822- II
Single Zone Relay*



AR861-2II/3II
2 & 3 Zone Relay with Priority*



IR882
Isolation Relay



ARM-2P/3P/4P/6P
Switching Relays with Priority*



AD-1/4
ARM Control Expansion Module*



DPM-2
Outdoor Reset Control

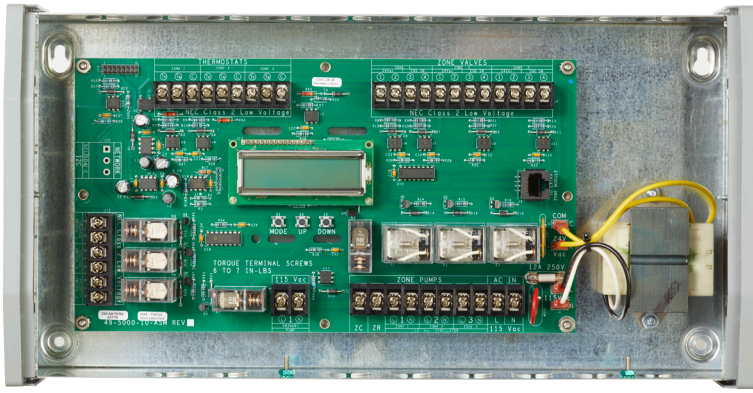


CSA US

*Indicates a CSA certified model.

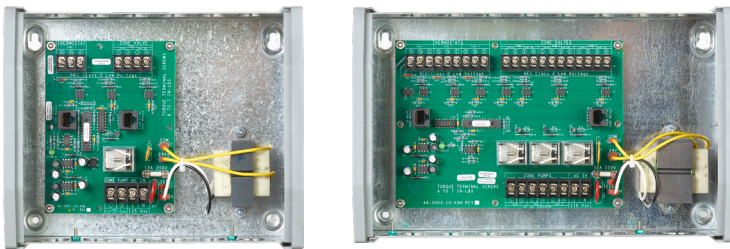
The Difference is in the Details

UZ3, UZ4, UZ6 Universal Control



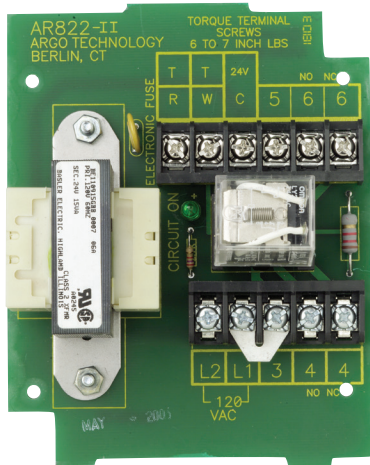
- 3/4/6 zone control
- Control pumps, zone valves, or both
- Programmable Priority (On/Off), Pump Exercising, Pump Purge and ZC/ZR active/inactive
- Connects all types of 24 volt zone valves (two, three, or four wire)
- (3) Programmable end switches - configure zones to match up with condensing boilers with multiple XX inputs such as central heating, DHW and low temperature zone
- Thermostat Connection: Tr-Tw-C

EZ1, EZ3 Universal Control Expansion Module



- 1 and 3 zone expansion modules
- Daisy chain modules to Universal Control - Control up to 15 total zones
- Ethernet Plug n'play connection cable included
- Universal Control automatically recognizes expansion modules when connected

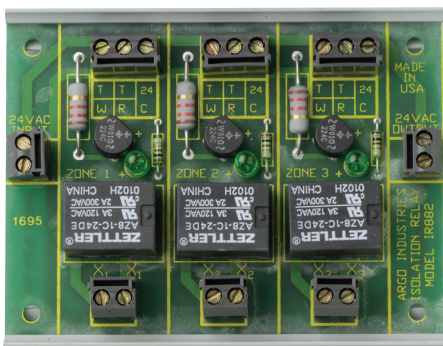
AR822-II Single Zone Relay



- Single Zone
- Plug-in replacement relay
- Auto-reset Electronic fuse protection - eliminates nuisance service calls
- DPDT
- 15 VA Transformer, Full 7.2 Amp, 1/3 hp Relay load rating

100% Factory Tested for Reliability and Performance!

IR882* Isolation Relay



- Up to Three Zones
- For use with power robbing programmable thermostats or 3-wire (R, C, W)
- Interfaces with solid state thermostats
- Modules can be daisy chained for additional thermostats
- SPST

*Requires additional transformer.

AR861-2II, AR861-3II Two & Three Zone Relays

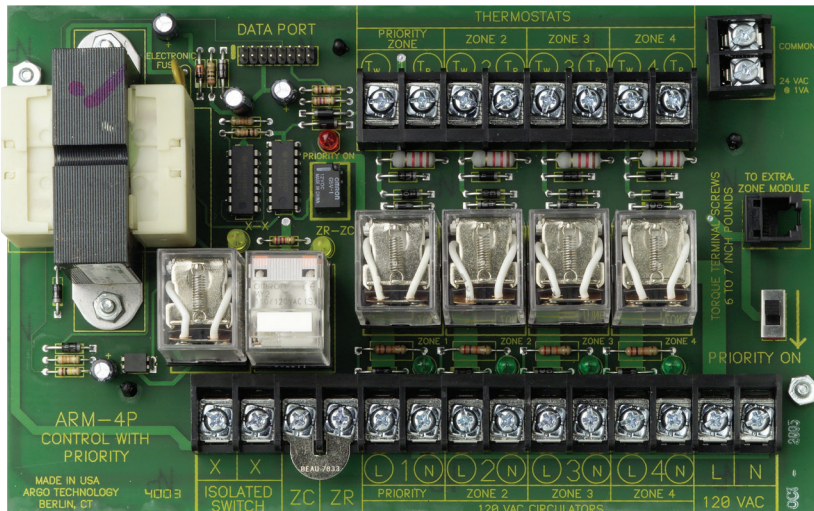


- 2-Zone AR861-2II or 3-Zone AR861-3II
- Plug-in replacement relays
- Switchable Priority
 - perfect for indirect water heaters or priority zones
- Auto-reset Electronic fuse protection
 - eliminates nuisance service calls
- 15 VA Transformer, Full 7.2 Amp, 1/3 hp Relay load rating



**5-Year Limited Warranty
Strongest Protection Available**

ARM-2P, ARM-3P, ARM-4P, ARM-6P Switching Relays



- 2, 3, 4 or 6 Zone Controls
- Expandable to 15 zones with plug-in expansion modules (AD-1 or AD-4)
- 5-second time delay for boiler shut-off
- Priority Safety timer - ensures other zones get heat every 30 minutes & prevents freeze-ups
- Electronic fuse - auto reset
- 30 VA Transformer⁽¹⁾⁽²⁾ - handles up to 15 zones 7.2 Amp, 1/3 hp relay rating
- Separate XX (isolated switch) & ZC/ZR relays - protect Boiler Aquastat
- Relay diagnostic light - seen through enclosure cover
- Premium plug-in replacement relays
- Clearly marked terminals with clamping plates
- Switchable priority
- 24 Vac Transformer terminals

(1) ARM-2P uses 20 VA Transformer.
(2) Requires dry contact type thermostat or use IR822 Isolation Relay.

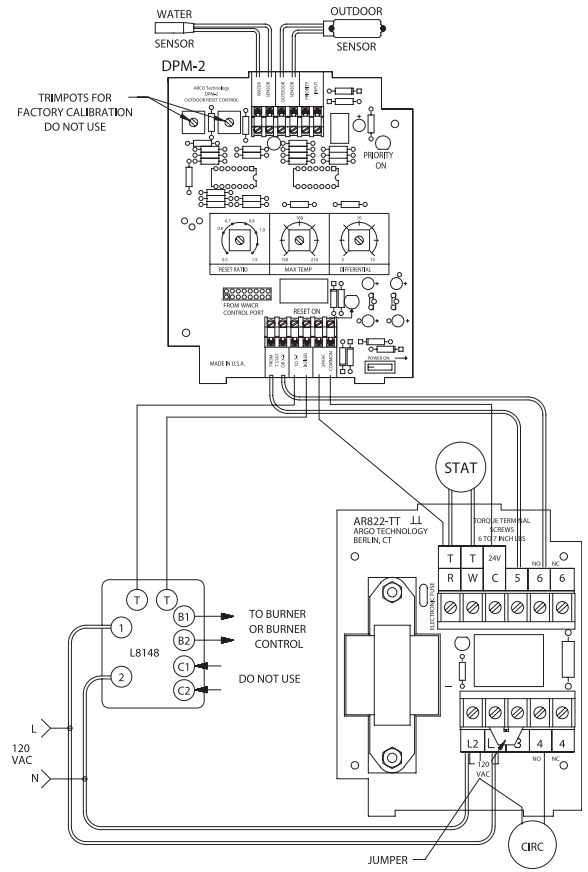
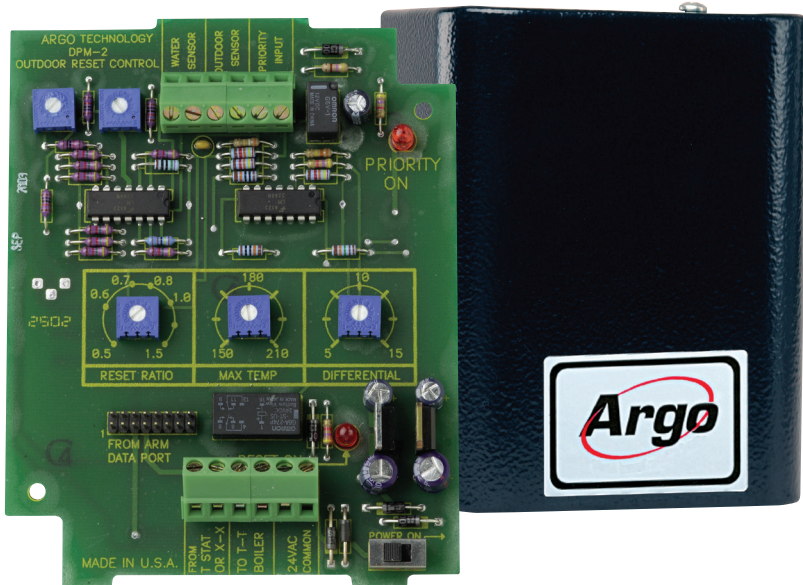
AD-1, AD-4 ARM Control Expansion Module



- AD-1 module provides 1 additional zone
- AD-4 module provides 4 additional zones
- 18" connecting cable included

DPM-2 Outdoor Reset Control

The DPM-2 monitors outside temperature and adjusts boiler water temperature to match the heating demand, maximizing efficiency and reducing boiler usage.



- Simple plug 'n play data port ribbon connection when used in conjunction with any Argo Zone Relay Control
- Or can work with most competitors' relays
- Reduces heating costs an average of 10% - 15% a year (depending on climate).

Standard Equipment:

