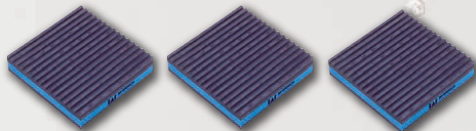
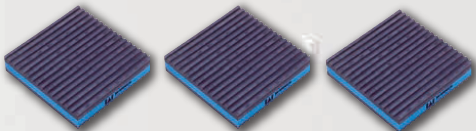
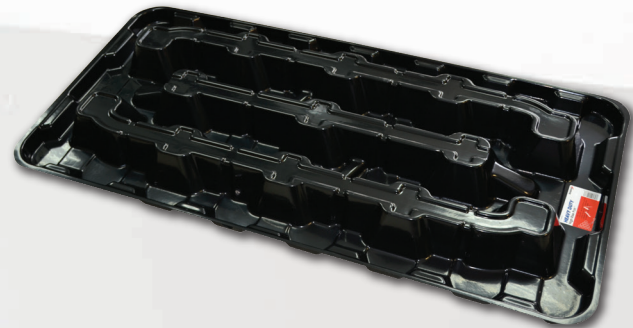


New Pans Now Available!

Heavy Duty High Rise Pans

A thicker, tougher version of our regular High Rise Pans. Each pan includes a kit with one CS1200 float switch, six EVA™ anti-vibration pads and one 3/4" PVC male adapter.



Furnace Pans

DiversiTech furnace pans are designed specifically for furnace installations. Their one piece construction provides strength and durability for any furnace installation.



About DiversiTech

DiversiTech Corporation is North America's largest manufacturer of equipment pads and a leading manufacturer and supplier of components and related products for the heating, ventilating, air conditioning, and refrigeration (HVACR) industry.

Headquartered in the Atlanta, GA metropolitan area, DiversiTech manufactures a suite of products, which includes a wide range of mechanical, electrical, chemical, and structural parts for HVACR systems. The company maintains manufacturing and distribution facilities in key U.S. locations and in the Far East. DiversiTech has enjoyed a continued history of successful growth and has acquired industry-recognized brand names including Wagner Manufacturing and Specialty Chemical.

HIGH RISE PAN™



Download an electronic version of this brochure at:
<http://media.diversitech.com/doc/DOC00024.pdf>

DiversiTech Corporation
 6650 Sugarloaf Parkway
 Duluth, GA 30097
800.995.2222
678.542.3700 FAX
www.diversitech.com

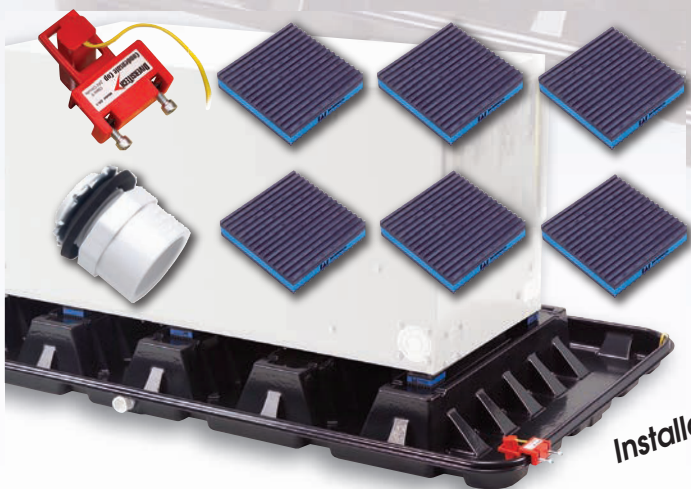
©2015 DiversiTech Corporation
 LIT-FLY-HRP, 8/15

DIVERSITECH 

DiversiTech High Rise Pan™

The High Rise Pan™ is an innovative new plastic drain pan design which allows placement of an air handler 2-3/4" above the outside lip of the pan without the need for separate, cumbersome mounting blocks. The pan has a molded-in network of risers to give a 5" lift. The risers are positioned to accept a wide variety of air handler sizes. Each riser has a specially shaped area at each end to accommodate a 2" x 2" anti-vibration pad which allows for quiet operation at all times. Other features include heavy duty reinforcement throughout to give plenty of support as well as rolled edges for durability. One-piece plastic construction ensures no rust, leaks, or seams to split. Each High Rise Pan™ comes complete with a Condensate Cop™ float switch, six EVA™ anti-vibration pads, and one 3/4" PVC male adapter. Installation is straightforward and hassle-free.

Each High Rise Pan™ comes complete with a Condensate Cop™ float switch, six EVA™ anti-vibration pads, and one 3/4" PVC male adapter. You will never forget a part because you have a complete kit!



Installation is straightforward and hassle-free!

Features

Benefits

Nestable

Nestability decreases the volume needed to store and transport the pans.



Water pushes to the side of the pan

This prevents stagnant water in inaccessible areas which helps prevent slime and algae buildup, eliminating call backs because of smell.

Includes EVA™ pads

EVA™ pads increase the overall height of the unit which increases available drain line pitch. EVA™ pads also create better sound and vibration dampening for a quieter installation, meaning less call backs due to noise.



Standard anti-vibration pad

Uses a standard, readily available anti-vibration pad, eliminating the need to stock extra SKUs. Competitor products use specialized grommets which are not commonly available.

Installation kit includes six EVA™ pads and Condensate Cop™ float switch

The universal CC-1 float switch can be placed anywhere on the pan. It can also be used on other secondary drain pans (metal or plastic). You will never forget a part because you have a complete kit!

80% thicker than the standard drain pan

Stronger and more durable for job site installations; resists work place installation damage, minimizing the need to replace drain pans damaged at job site.



ABS construction/Flexible material

Time-tested material has been used for 15 years in the market, assuring long term performance. Fast, easy installation in tight areas with flexible material.

Heat/Cold resistance

Suitable for a wide range of installation temperatures — from -13°F to 140°F.

5" Riser

5" riser gives additional height needed to assure proper drain line pitch.

Heavy-duty reinforced construction

Gives support for a wider range of air handler applications, minimizing the need to replace drain pans damaged at job site.

